

Delaware County

Ag. District 2



Ag. District 12



Ag. District 6



Ag. District 14



Sheet 2



DISTRICT CERTIFICATIONS and TOWNS

DISTRICT 2

CERTIFIED 8/3/2022

Davenport Hamden  
Delhi Meredith  
Franklin Walton

DISTRICT 12

CERTIFIED 2/28/2018

Deposit Tompkins  
Masonville Walton  
Sidney

DISTRICT 6

CERTIFIED 1/11/2016

Colchester  
Hamden  
Hancock

DISTRICT 14

CERTIFIED 8/1/2018

Franklin village:  
Meredith Franklin

MAP SOURCE INFORMATION

Map created at Cornell IRIS (Institute for Resource Information Sciences)  
<<http://iris.cals.cornell.edu>> for the NYS Department of Agriculture and Markets  
<<https://www.agriculture.ny.gov>>

Agricultural Districts boundary data is available at CUGIR (Cornell University Geospatial Information Repository) website: <<http://cugir.library.cornell.edu>>

Base Map: state250\_bw.tif 1998  
Scale: 1:250,000; County boundaries imported from the file nyshore.e00 from the NYSGIS Clearinghouse website: <<http://gis.ny.gov>>

Base map contains data copyrighted by the NYS ITS GIS Program.

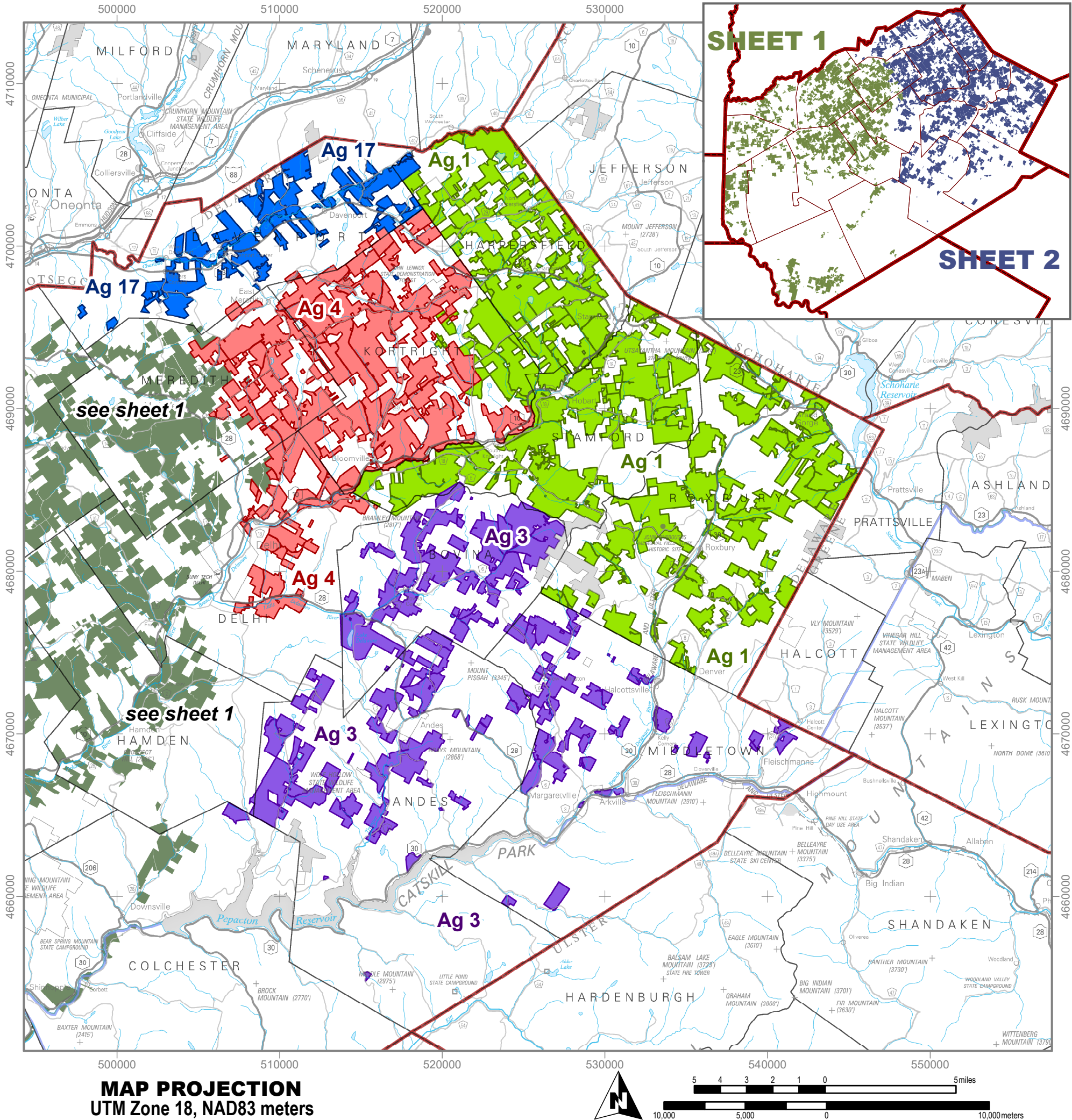
DISCLAIMER

This is a general reference to Agricultural District boundaries; not a legal substitute for actual tax parcel information.

Boundaries as certified prior to January 2023

Open Enrollment Annual Inclusions added after the certification date are not included in this data. Check with county agencies to confirm the status of individual parcels.





Delaware County

- Ag. District 1
- Ag. District 4
- Ag. District 3
- Ag. District 17
- see sheet 1

DISTRICT CERTIFICATIONS and TOWNS

DISTRICT 1

CERTIFIED 6/29/2021

Harpersfield  
Kortright  
Roxbury  
Stamford

DISTRICT 3

CERTIFIED 4/20/2022

Andes  
Bovina  
Colchester  
Delhi  
Middletown  
Roxbury  
village:  
Margaretville

DISTRICT 4

CERTIFIED 12/28/2022

Davenport  
Delhi  
Kortright  
Meredith

DISTRICT 17

CERTIFIED 8/22/2011

Davenport  
Harpersfield  
Kortright

MAP SOURCE INFORMATION

Map created at Cornell IRIS (Institute for Resource Information Sciences) <<http://iris.cals.cornell.edu>> for the NYS Department of Agriculture and Markets <<https://www.agriculture.ny.gov>>

Agricultural Districts boundary data is available at CUGIR (Cornell University Geospatial Information Repository) website: <<http://cugir.library.cornell.edu>>

Base Map: state250\_bw.tif 1998  
Scale: 1:250,000; County boundaries imported from the file nyshore.e00 from the NYSGIS Clearinghouse website: <<http://gis.ny.gov>>

Base map contains data copyrighted by the  
NYS ITS GIS Program.

DISCLAIMER

This is a general reference to Agricultural District boundaries; not a legal substitute for actual tax parcel information.

Boundaries as certified prior to January 2023

Open Enrollment Annual Inclusions added after the certification date are not included in this data. Check with county agencies to confirm the status of individual parcels.