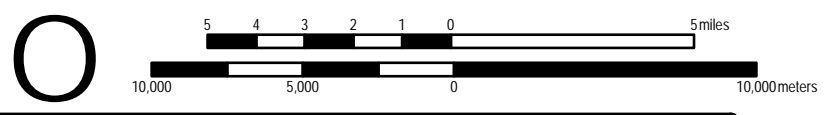


MAP PROJECTION  
UTM Zone 18, NAD83 meters



KEY

Ag. District 1

DISTRICT CERTIFICATION and TOWNS

DISTRICT 1 CERTIFIED 9/5/2017

Chesterfield	Jay	Moriah	Ticonderoga
Crown Point	Keene	North Elba	Westport
Elizabethtown	Lewis	Saint Armand	Willsboro
Essex	Minerva	Schroon	Wilmington

MAP SOURCE INFORMATION

Map created at Cornell IRIS (Institute for Resource Information Sciences)  
<<http://iris.cals.cornell.edu>> for the NYS Department of Agriculture and Markets  
<<https://www.agriculture.ny.gov>>

Agricultural Districts boundary data is available at CUGIR (Cornell University Geospatial Information Repository)  
website: <<http://cugir.library.cornell.edu>>

Base Map: state250\_bw.tif 1998  
Scale: 1:250,000; County boundaries imported from the file nyshore.e00 from the NYSGIS Clearinghouse website:  
<<http://gis.ny.gov>>

Base map contains copyrighted by the NYS ITS GIS Program.

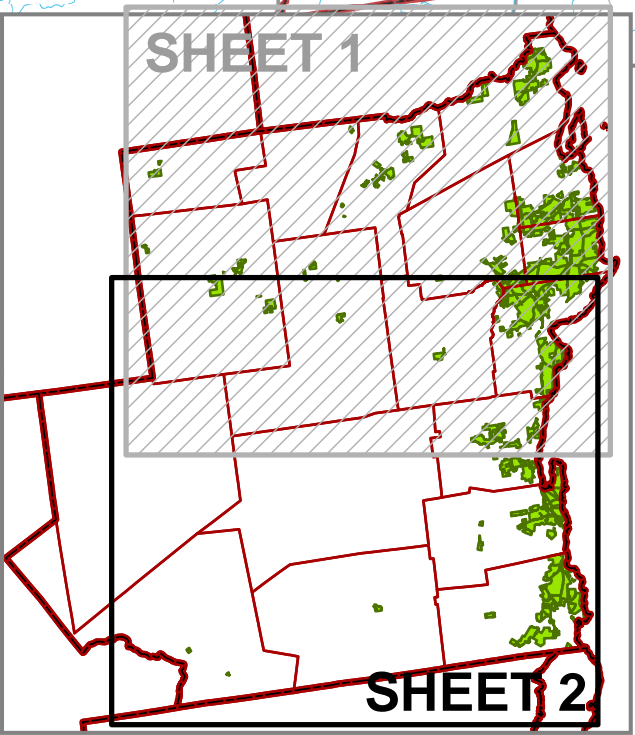
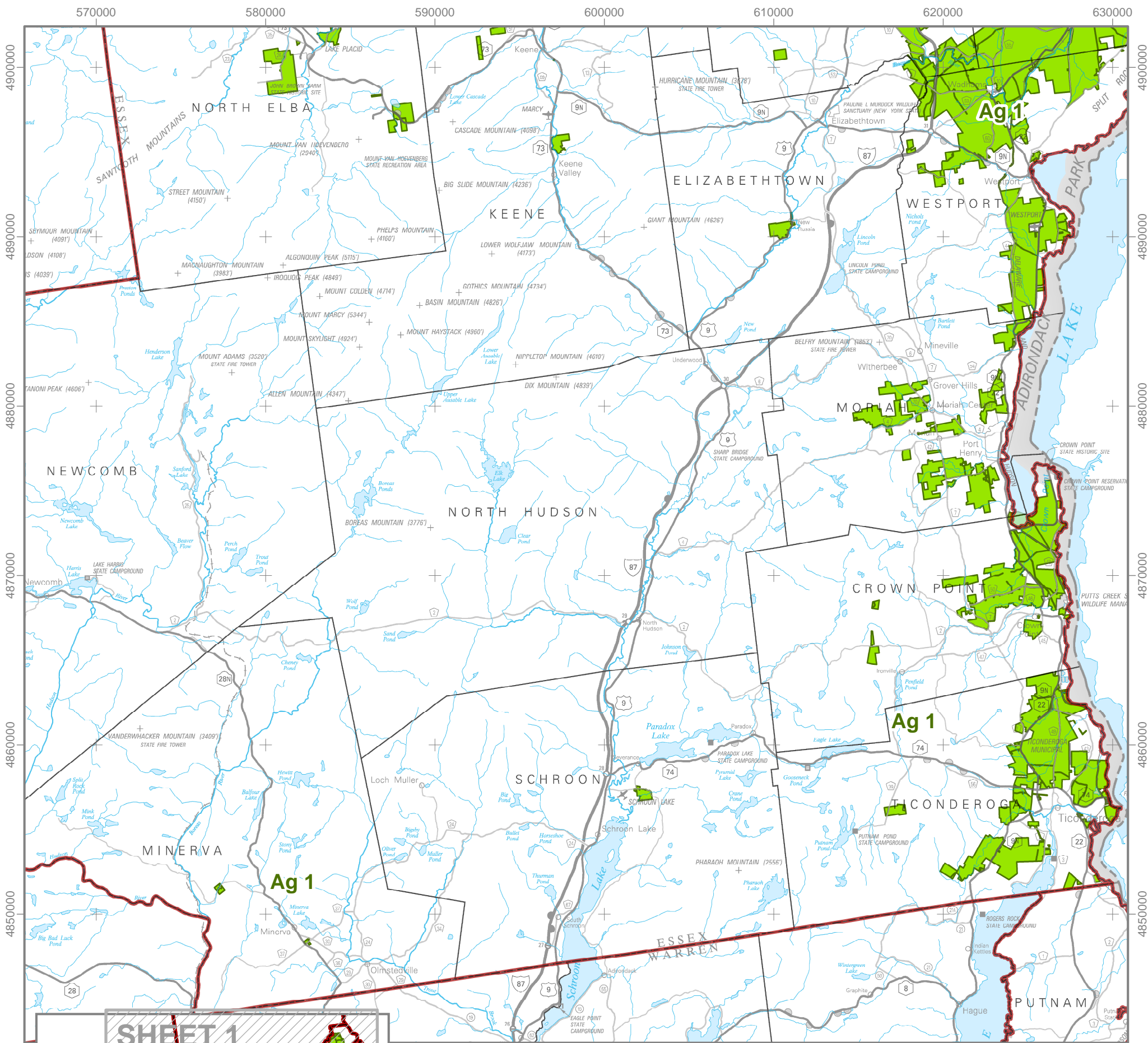
DISCLAIMER

This is a general reference to Agricultural District boundaries; not a legal substitute for actual tax parcel information.


Boundaries as certified prior to April 2018

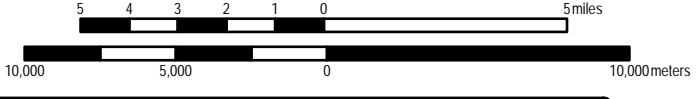
Open Enrollment Annual Additions through March 2018 are included in this data. Later additions are not. Check with county agencies to confirm the status of individual parcels.





MAP PROJECTION  
UTM Zone 18, NAD83 meters





KEY

Ag. District 1 

DISTRICT CERTIFICATION and TOWNS			
DISTRICT 1 CERTIFIED 9/5/2017			
Chesterfield	Jay	Moriah	Ticonderoga
Crown Point	Keene	North Elba	Westport
Elizabethtown	Lewis	Saint Armand	Willsboro
Essex	Minerva	Schroon	Wilmington

MAP SOURCE INFORMATION

Map created at Cornell IRIS (Institute for Resource Information Sciences)  
<<http://iris.cals.cornell.edu>> for the NYS Department of Agriculture and Markets  
<<https://www.agriculture.ny.gov>>  
Agricultural Districts boundary data is available at CUGIR (Cornell University Geospatial Information Repository)  
website: <<http://cugir.library.cornell.edu>>

Base Map: state250\_bw.tif 1998  
Scale: 1:250,000; County boundaries imported from the file nyshore.e00 from the NYSGIS Clearinghouse website:  
<<http://gis.ny.gov>>  
Base map contains copyrighted by the NYS ITS GIS Program.

DISCLAIMER

This is a general reference to Agricultural District boundaries; not a legal substitute for actual tax parcel information.  
Boundaries as certified prior to April 2018  
Open Enrollment Annual Additions through March 2018 are included in this data. Later additions are not. Check with county agencies to confirm the status of individual parcels.