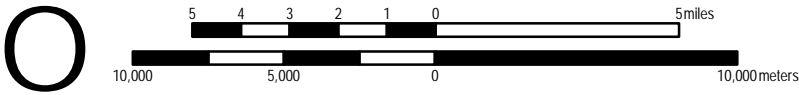


MAP PROJECTION
UTM Zone 18, NAD83 meters



Franklin County

Ag. District 1

DISTRICT CERTIFICATION and TOWNS

DISTRICT 1

CERTIFIED 11/10/2020

Bangor	Burke	Franklin	Waverly
Bellmont	Chateaugay	Fort Covington	Westville
Bombay	Constable	Harrietstown	
Brandon	Dickinson	Malone	
Brighton	Duane	Moira	

MAP SOURCE INFORMATION

Map created at Cornell IRIS (Institute for Resource Information Sciences)
<<http://iris.cals.cornell.edu>> for the NYS Department of Agriculture and Markets
<<https://www.agriculture.ny.gov>>

Base Map: state250_bw.tif 1998
Scale: 1:250,000; County boundaries imported from the file nyshore.e00 from the NYSGIS Clearinghouse website:
<<http://gis.ny.gov>>

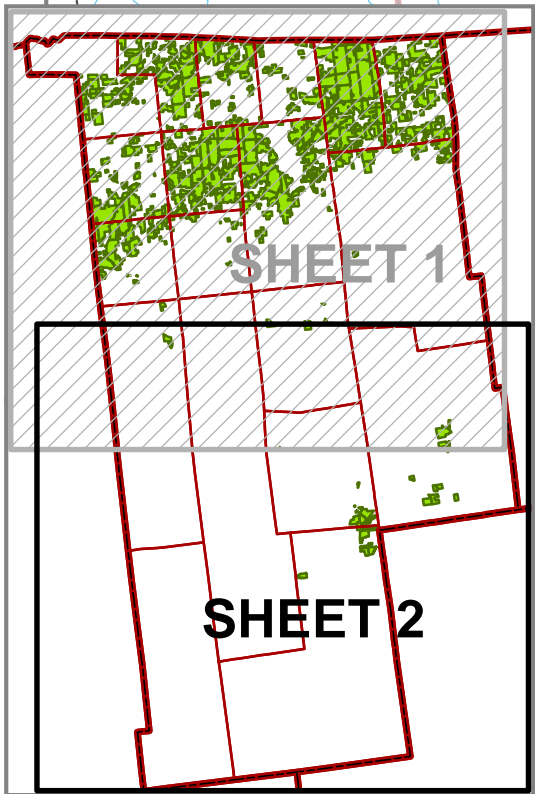
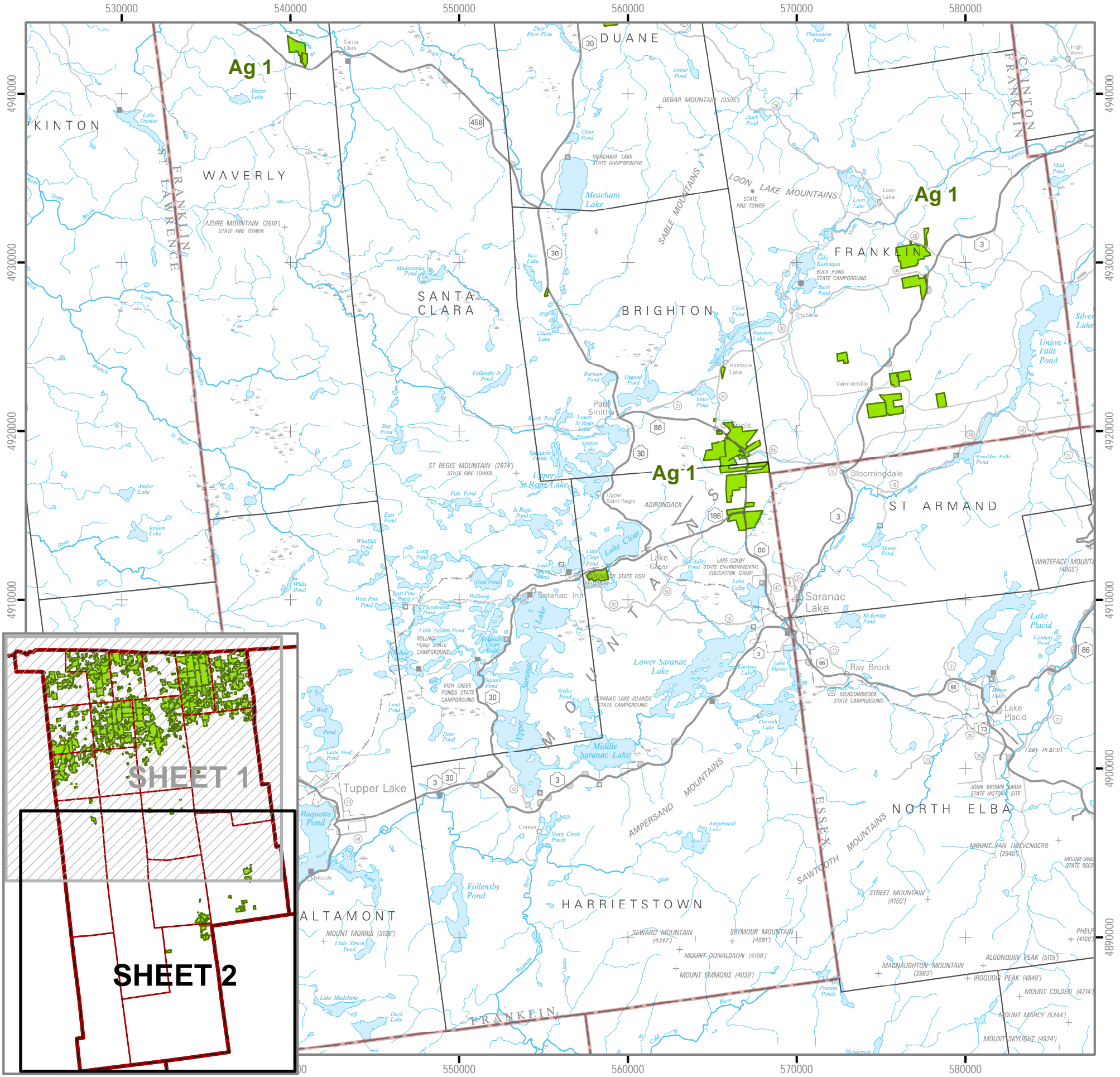
DISCLAIMER
This is a general reference to Agricultural District boundaries; not a legal substitute for actual tax parcel information.

Boundaries as certified prior to January 2021

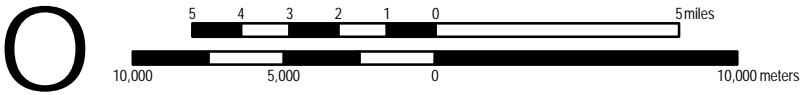
Agricultural Districts boundary data is available at CUGIR (Cornell University Geospatial Information Repository) website:
<<http://cugir.library.cornell.edu>>

Base map contains data copyrighted by the NYS ITS GIS Program.

Open Enrollment Annual Inclusions added after the certification date are not included in this data. Check with county agencies to confirm the status of individual parcels.



MAP PROJECTION
UTM Zone 18, NAD83 meters



Franklin County

Ag. District 1



DISTRICT CERTIFICATION and TOWNS
DISTRICT 1

Bangor
Bellmont
Bombay
Brandon
Brighton

Burke
Chateaugay
Constable
Dickinson
Duane

Franklin
Fort Covington
Harrietstown
Malone
Moira

Waverly
Westville

CERTIFIED 11/10/2020

MAP SOURCE INFORMATION

Map created at Cornell IRIS (Institute for Resource Information Sciences)
<<http://iris.cals.cornell.edu>> for the NYS Department of Agriculture and Markets
<<https://www.agriculture.ny.gov>>

Base Map: state250_bw.tif 1998
Scale: 1:250,000; County boundaries imported from the file nyshore.e00 from the NYSGIS Clearinghouse website:
<<http://gis.ny.gov>>

Agricultural Districts boundary data is available at CUGIR (Cornell University Geospatial Information Repository) website:
<<http://cugir.library.cornell.edu>>

Base map contains data copyrighted by the NYS ITS GIS Program.

DISCLAIMER

This is a general reference to Agricultural District boundaries; not a legal substitute for actual tax parcel information.

Boundaries as certified prior to January 2021

Open Enrollment Annual Inclusions added after the certification date are not included in this data. Check with county agencies to confirm the status of individual parcels.