

Jefferson County

Ag. District 2  See sheet 2 

**DISTRICT
CERTIFICATIONS and TOWNS**

DISTRICT 2 CERTIFIED 2/2/2016

- | | |
|--|--------------|
| Alexandria | Lyme |
| Antwerp | Orleans |
| Brownville | Pamelia |
| Cape Vincent | Philidelphia |
| Clayton | Theresa |
| LeRay | villages: |
| Brownville, Cape Vincent, Chaumont,
Glen Park, Philadelphia | |

MAP SOURCE INFORMATION

Map created at Cornell IRIS (Institute for Resource Information Sciences) <<http://iris.cals.cornell.edu>> for the NYS Departmen of Agriculture and Markets <<https://www.agriculture.ny.gov>>

Agricultural Districts boundary data is available at CUGIR (Cornell University Geospatial Information Repository) website: <<http://cugir.library.cornell.edu>>

Base Map: state250_bw.tif 1998; Scale: 1:250,000
County boundaries imported from the file nyshore.e00 from the NYSGIS Clearinghouse website: <<http://gis.ny.gov>>

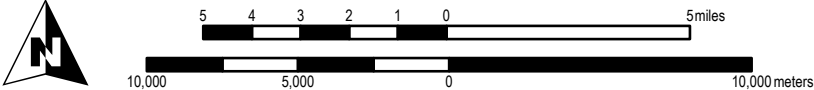
**Base maps contains data copyrighted
by the NYS ITS GIS Program.**

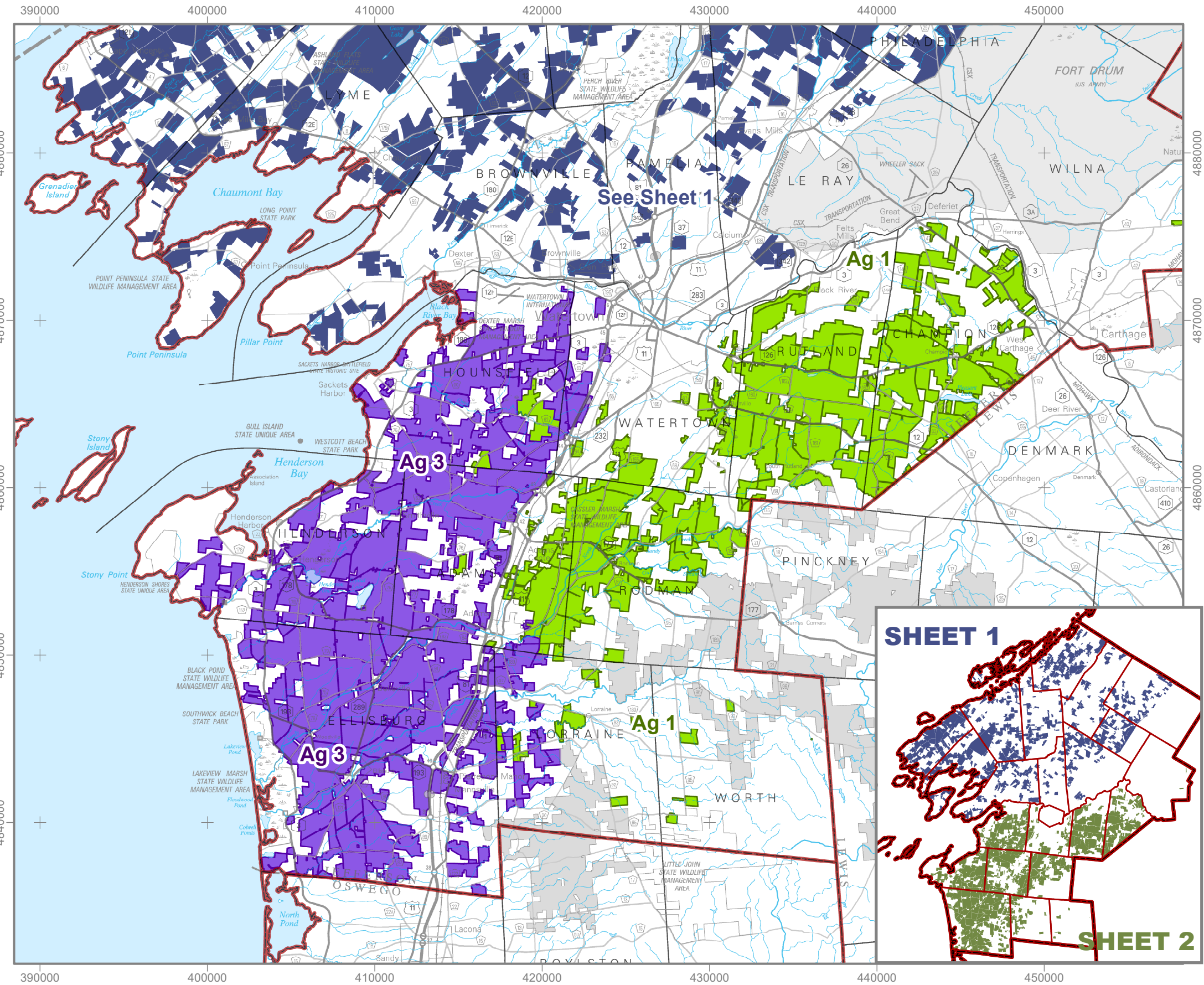
DISCLAIMER This is a general reference to Agricultural District boundaries; not a legal substitute for actual tax parcel information.

Boundaries as prior to January 2023



Open Enrollment Annual Inclusions added after the certification date are not included in this data. Check with county agencies to confirm the status of individual parcels.


MAP PROJECTION
UTM Zone 18, NAD83 meters





Jefferson County

Ag. District 1  Ag. District 3 

See sheet 1 

DISTRICT
CERTIFICATIONS and TOWNS

DISTRICT 1	DISTRICT 3
CERTIFIED 4/25/2022	CERTIFIED 2/28/2018
Adams Lorraine Watertown	Adams Lorraine
Champion Rodman Wilna	Ellisburg Hounsfield
Hounsfield Rutland Worth	Henderson Watertown
village: Adams	villages: Adams, Ellisburg

MAP SOURCE INFORMATION

Map created at Cornell IRIS (Institute for Resource Information Sciences) <<http://iris.cals.cornell.edu>> for the NYS Department of Agriculture and Markets <<https://www.agriculture.ny.gov>>

Agricultural Districts boundary data is available at CUGIR (Cornell University Geospatial Information Repository) website: <<http://cugir.library.cornell.edu>>

Base Map: state250_bw.tif 1998; Scale: 1:250,000
County boundaries imported from the file nyshore.e00 from the NYSGIS Clearinghouse website: <<http://gis.ny.gov>>

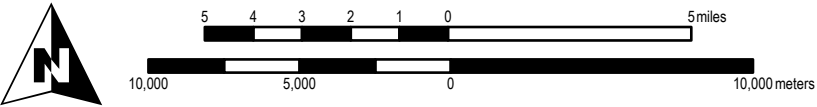
Base maps contains data copyrighted
by the NYS ITS GIS Program.

DISCLAIMER This is a general reference to Agricultural District boundaries; not a legal substitute for actual tax parcel information.

Boundaries as prior to January 2023

Open Enrollment Annual Inclusions added after the certification date are not included in this data. Check with county agencies to confirm the status of individual parcels.

MAP PROJECTION
UTM Zone 18, NAD83 meters



SHEET 1

SHEET 2