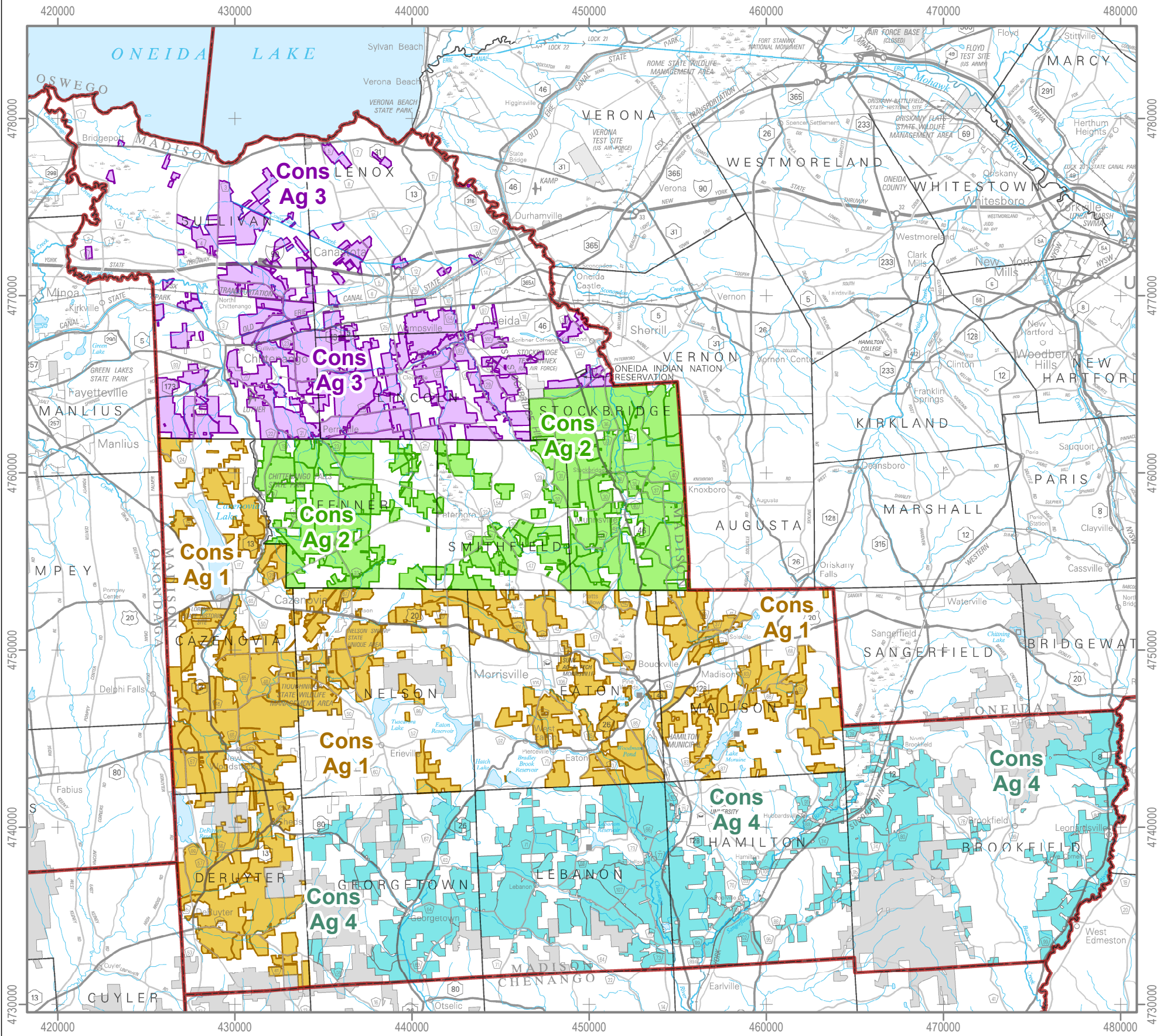


MADISON COUNTY



Madison County

- Cons Ag District 1
- Cons Ag District 2
- Cons Ag District 3
- Cons Ag District 4

**MAP SOURCE
INFORMATION**

Map created at Cornell IRIS
(Institute for Resource Information
Sciences) <<http://iris.cals.cornell.edu>>
for the NYS Department of Agriculture
and Markets
<<https://www.agriculture.ny.gov>>

Agricultural Districts boundary data
is available at CUGIR (Cornell University
Geospatial Information Repository) website:
<<http://cugir.library.cornell.edu>>

Base Map: state250_bw.tif 1998
Scale: 1:250,000
County boundaries imported from
the file nyshore.e00 from the
NYSGIS Clearinghouse website:
<<http://gis.ny.gov>>

Base map contains data copyrighted by the NYS ITS GIS Program.

DISCLAIMER This is a general reference to Agricultural District
boundaries; not a legal substitute for actual tax parcel information.

Boundaries as certified through April 2022

Open Enrollment Annual Inclusions added after the certification date
are not included in this data. Check with county agencies to
confirm the status of individual parcels.

**DISTRICT
CERTIFICATIONS
and TOWNS**

**CONSOLIDATED
DISTRICT 1**
CERTIFIED 9/10/2013
Cazenovia
Deruyter
Eaton
Madison
Nelson
village:
Cazenovia

**CONSOLIDATED
DISTRICT 2**
CERTIFIED 9/17/2012
Fenner
Smithfield
Stockbridge

**CONSOLIDATED
DISTRICT 3**
CERTIFIED 5/24/2021
Lenox
Lincoln
Sullivan
city of Oneida

**CONSOLIDATED
DISTRICT 4**
CERTIFIED 4/4/2022
Brookfield
Georgetown
Hamilton
Lebanon

MAP PROJECTION
UTM Zone 18, NAD83 meters

