

MAP PROJECTION
UTM Zone 18, NAD83 meters

Oneida County

- Ag. District 1
- Ag. District 2
- Ag. District 3
- Ag. District 7
- See Sheet 2

DISTRICT
CERTIFICATIONS
and TOWNS

DISTRICT 1

CERTIFIED 9/22/2017
Annsville
Camden
Florence
Vienna
village: Camden

DISTRICT 2

CERTIFIED 3/6/2018
Ava
Lee
Western
city of Rome

DISTRICT 3

CERTIFIED 3/13/2019
Boonville
Forestport
Remsen
Steuben
villages:
Boonville, Remsen

DISTRICT 7

CERTIFIED 11/3/2016
Deerfield
Floyd
Marcy
Trenton
village: Holland Patent
city of Utica

MAP SOURCE
INFORMATION

Map created at Cornell IRIS
(Institute for Resource
Information Sciences)
<<http://iris.cals.cornell.edu>>
for the NYS Department of
Agriculture and Markets
<<https://www.agriculture.ny.gov>>

Agricultural Districts boundary
data is available at CUGIR
(Cornell University Geospatial
Information Repository) website:
<<http://cugir.library.cornell.edu>>

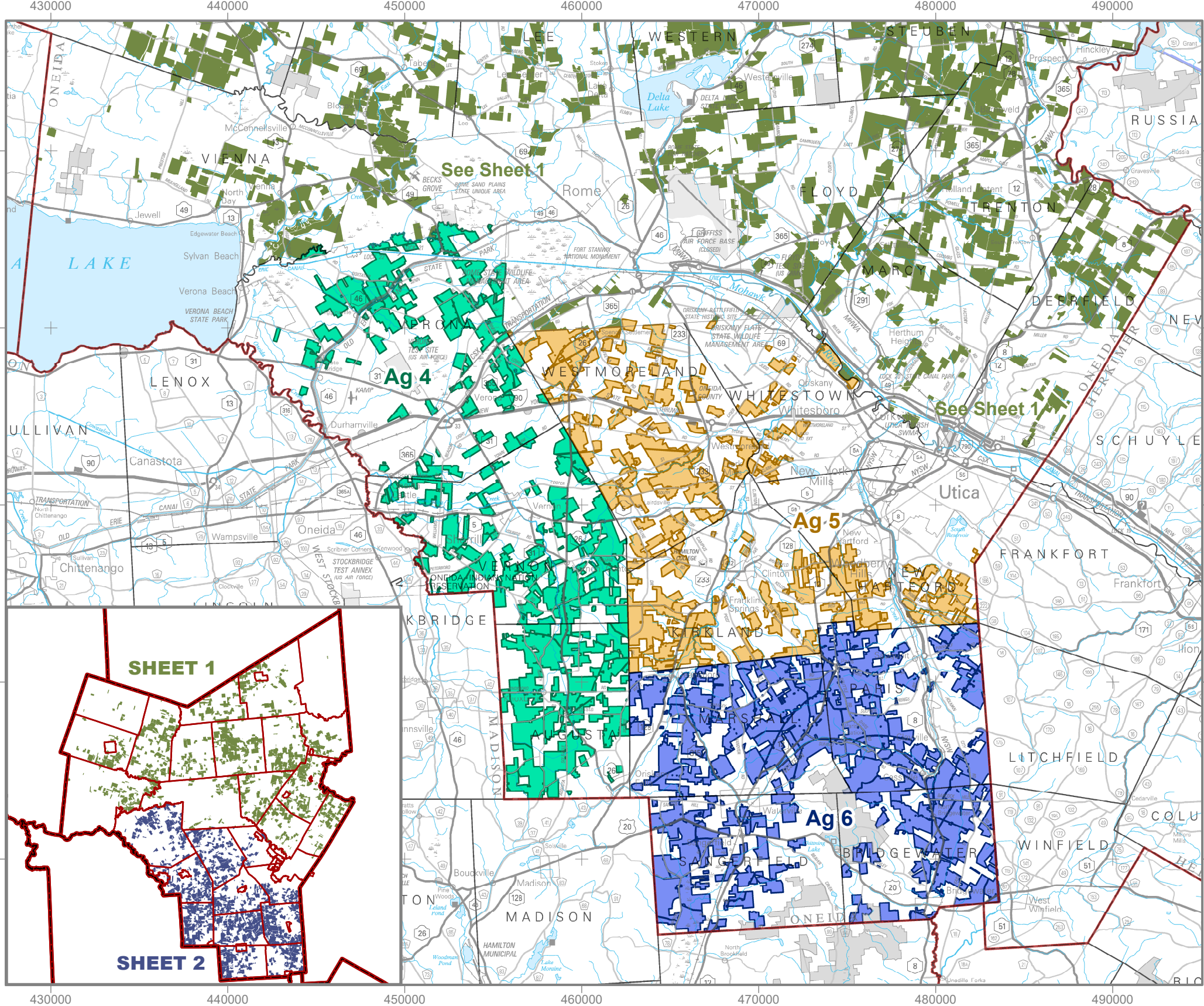
Base Map: state250_bw.tif 1998
Scale: 1:250,000; County
boundaries imported from the
file nyshore.e00 from the
NYSGIS Clearinghouse website:
<<http://gis.ny.gov>>

Base map contains data
copyrighted by the NYS
ITS GIS Program.

DISCLAIMER
This is a general reference to
Agricultural District boundaries;
not a legal substitute for actual
tax parcel information.

Boundaries as prior to
January 2023

Open Enrollment Annual
Inclusions added through 2022
are included in this data. Newer
additions are not. Check with
county agencies to confirm the
status of individual parcels.



MAP PROJECTION
UTM Zone 18, NAD83 meters



Oneida County

- Ag. District 4
- Ag. District 5
- Ag. District 6
- See Sheet 1

**MAP SOURCE
INFORMATION**

Map created at Cornell IRIS
(Institute for Resource
Information Sciences)
<<http://iris.cals.cornell.edu>>
for the NYS Department of
Agriculture and Markets
<<https://www.agriculture.ny.gov>>

**DISTRICT
CERTIFICATIONS
and TOWNS**

DISTRICT 4

CERTIFIED 8/5/2021

Augusta
Vernon
Verona

village: Oneida Castle
city of Sherrill

DISTRICT 5

CERTIFIED 12/20/2022

Kirkland
New Hartford
Westmoreland
Whitestown

DISTRICT 6

CERTIFIED 10/15/2015

Bridgewater
Kirkland
Marshall
Paris

Sangerfield
village: Waterville

Agricultural Districts boundary
data is available at CUGIR
(Cornell University Geospatial
Information Repository) website:
<<http://cugir.library.cornell.edu>>

Base Map: state250_bw.tif 1998
Scale: 1:250,000; County
boundaries imported from the
file nyshore.e00 from the
NYSGIS Clearinghouse website:
<<http://gis.ny.gov>>

**Base map contains data
copyrighted by the NYS
ITS GIS Program.**

DISCLAIMER
This is a general reference to
Agricultural District boundaries;
not a legal substitute for actual
tax parcel information.

Boundaries as prior to
January 2023

Open Enrollment Annual
Inclusions added through 2022
are included in this data. Newer
additions are not. Check with
county agencies to confirm the
status of individual parcels.