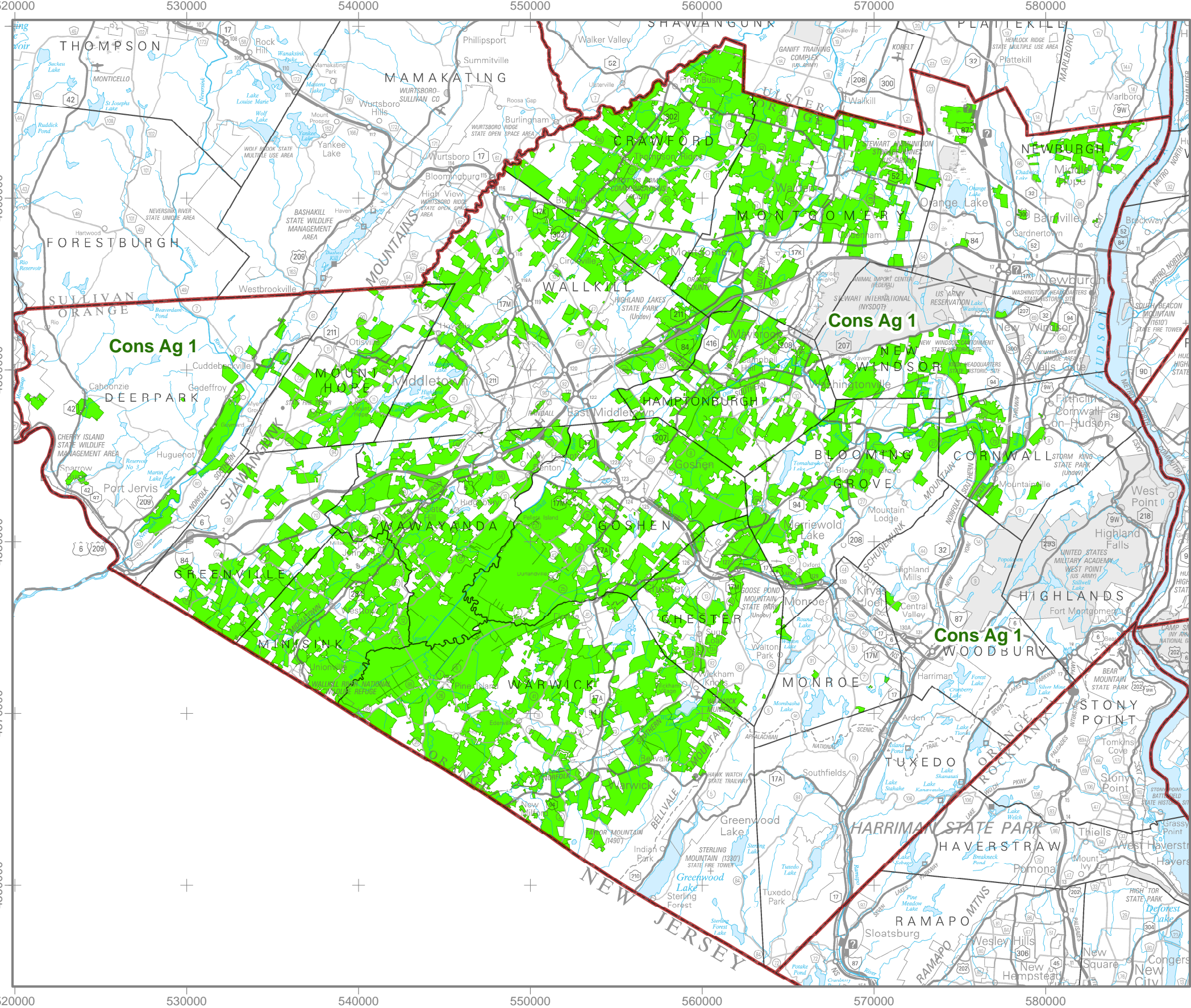
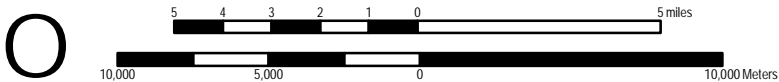


ORANGE COUNTY



MAP PROJECTION  
UTM Zone 18, NAD83 meters



Orange County

Cons Ag District 1



DISTRICT  
CERTIFICATION  
and TOWNS  
CONSOLIDATED  
DISTRICT 1

CERTIFIED 1/4/2021

- |                |             |
|----------------|-------------|
| Blooming Grove | Monroe      |
| Chester        | Montgomery  |
| Cornwall,      | Mount Hope  |
| Crawford       | New Windsor |
| Deerpark       | Newburgh    |
| Goshen         | Wallkill    |
| Greenville,    | Warwick     |
| Hamptonburgh   | Wawayanda   |
| Minisink       | Woodbury    |

MAP SOURCE  
INFORMATION

Map created at Cornell IRIS  
(Institute for Resource  
Information Sciences)  
<<http://iris.cals.cornell.edu>>  
for the NYS Department  
of Agriculture and Markets  
<<https://www.agriculture.ny.gov>>

Agricultural Districts boundary  
data is available at CUGIR  
(Cornell University Geospatial  
Information Repository) website:  
<<http://cugir.library.cornell.edu>>

Base Map: state250\_bw.tif 1998  
Scale: 1:250,000; County  
boundaries imported from the  
file nyshore.e00 from the  
NYSGIS Clearinghouse website:  
<<http://gis.ny.gov>>

Base map **town lines are  
approximate.**

Base map contains data  
copyrighted by the NYS  
ITS GIS Program.

DISCLAIMER

This is a general reference to Agricultural District boundaries; not a  
legal substitute for actual tax parcel information.

Boundaries as certified in January 2021

Open Enrollment Annual Inclusions added after the certification  
date are not included in this data. Check with county agencies to  
confirm the status of individual parcels.