

St Lawrence County

Ag. District 1  Ag. District 2 

DISTRICT CERTIFICATION
and TOWNS

DISTRICT 1

CERTIFIED 11/3/2016

DeKalb Gouverneur Morrisstown
DePeyster Hammond Oswegatchie
Edwards Hermon Pitcairn
Fowler Macomb Rossie
villages: Hammond, Richville

MAP SOURCE INFORMATION

Map created at Cornell IRIS (Institute
for Resource Information Sciences)
<<http://iris.cals.cornell.edu>> for the NYS
Department of Agriculture and Markets
<<https://www.agriculture.ny.gov>>

Base Map: state250_bw.tif 1998
Scale: 1:250,000; County boundaries
imported from the file nyshore.e00 from the
NYSGIS Clearinghouse website:
<<http://gis.ny.gov>>

Agricultural Districts boundary data is
available at CUGIR (Cornell University
Geospatial Information Repository) website:
<<http://cugir.library.cornell.edu>>

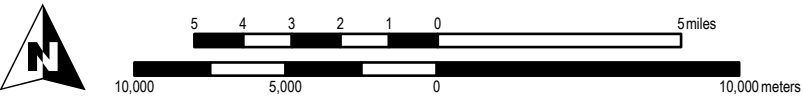
Base map contains data copyrighted
by the NYS ITS GIS Program.

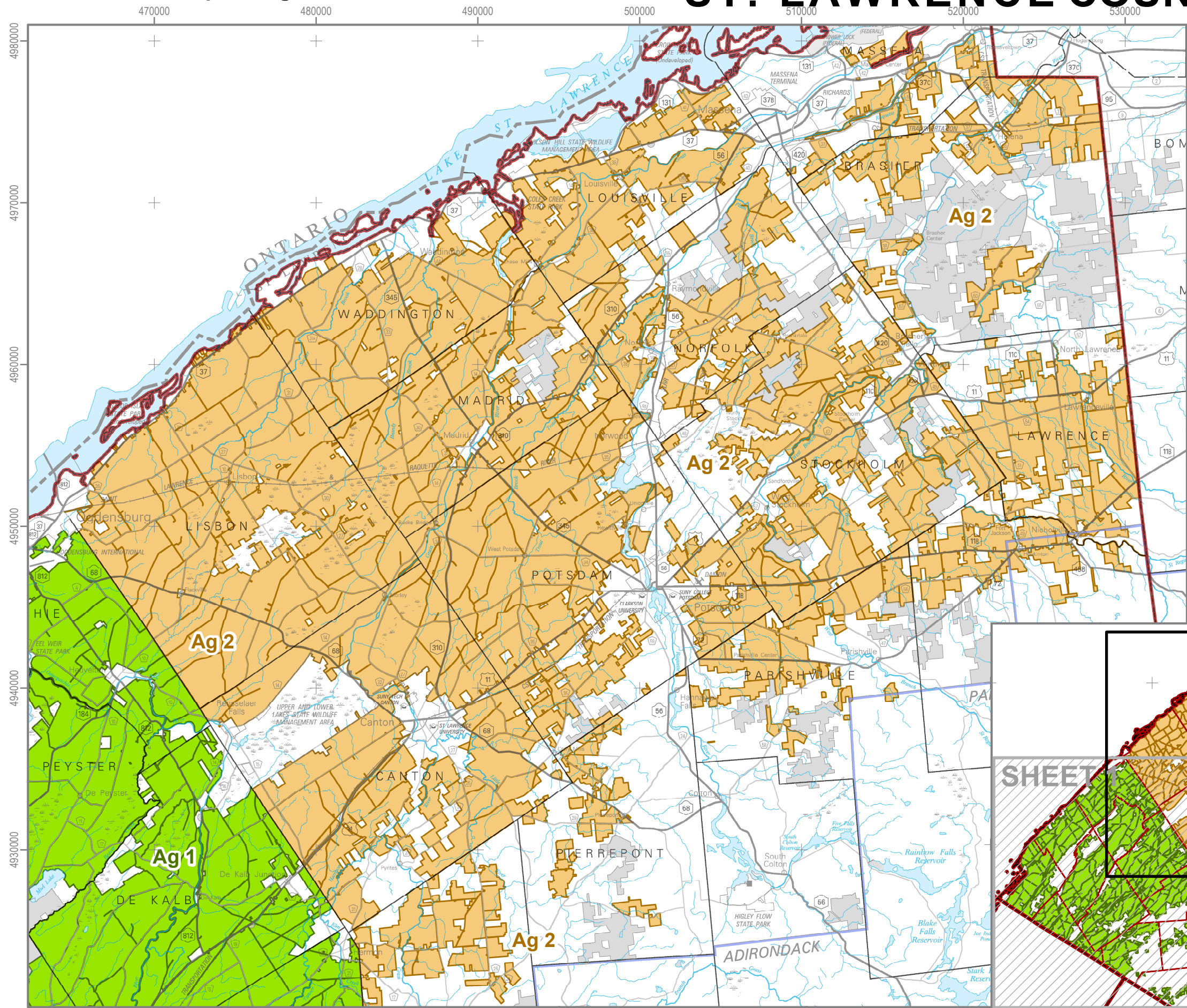
DISCLAIMER
This is a general reference to Agricultural
District boundaries; not a legal substitute
for actual tax parcel information.

Boundaries as certified prior to January 2023

Open Enrollment Annual Inclusions added
after the certification date are not included in
this data. Check with county agencies to
confirm the status of individual parcels.

MAP PROJECTION
UTM Zone 18, NAD83 meters





St Lawrence County

Ag. District 1  Ag. District 2 

DISTRICT CERTIFICATION and TOWNS

DISTRICT 2

CERTIFIED 10/24/2022

Brasher

Canton

Hopkinton

Lawrence

Lisbon

Louisville

Madrid

Massena

Norfolk

Parishville

Pierrepont

Potsdam

Russell

Stockholm

Waddington

villages:

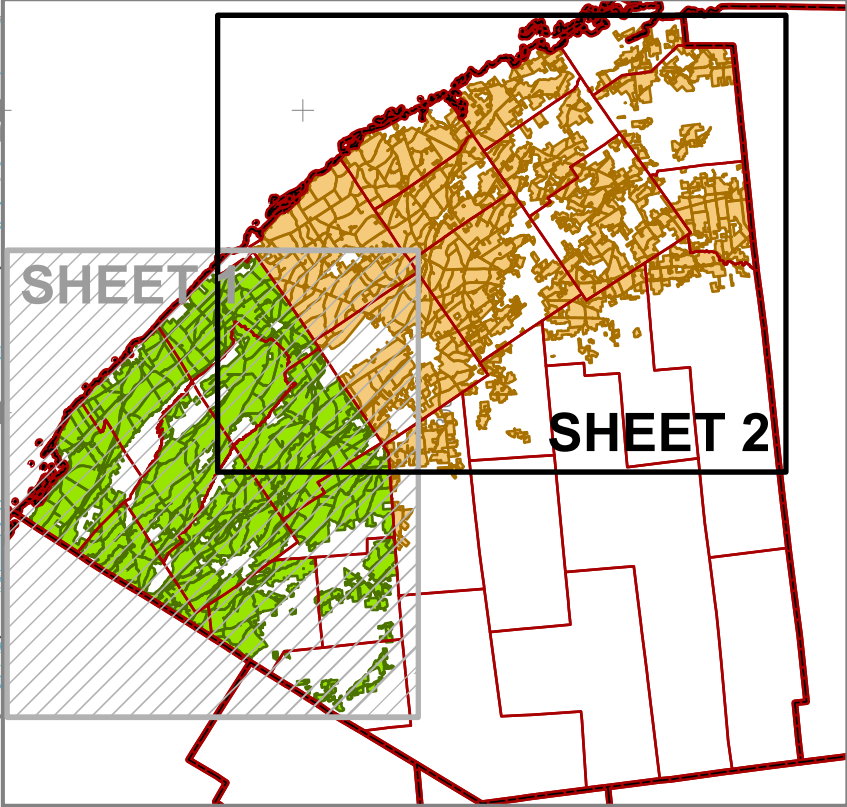
Canton, Massena, Potsdam, Waddington

MAP SOURCE INFORMATION

Map created at Cornell IRIS (Institute for Resource Information Sciences) <<http://iris.cals.cornell.edu>> for the NYS Department of Agriculture and Markets <<http://iris.cals.cornell.edu>>

Agricultural Districts boundary data is available at CUGIR (Cornell University Geospatial Information Repository) website: <<http://cugir.library.cornell.edu>>

Base Map: state250_bw.tif 1998 Scale: 1:250,000; County boundaries imported from the file nyshore.e00 from the NYSGIS Clearinghouse website: <<http://gis.ny.gov>>



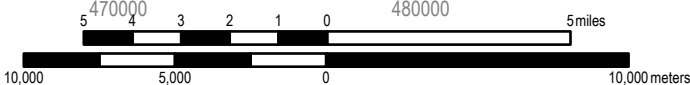
Base map contains data copyrighted by the NYS ITS GIS Program.

DISCLAIMER

This is a general reference to Agricultural District boundaries; not a legal substitute for actual tax parcel information.

Boundaries as certified prior to January 2023

Open Enrollment Annual Inclusions added after the certification date are not included in this data. Check with county agencies to confirm the status of individual parcels.



MAP PROJECTION UTM Zone 18, NAD83 meters